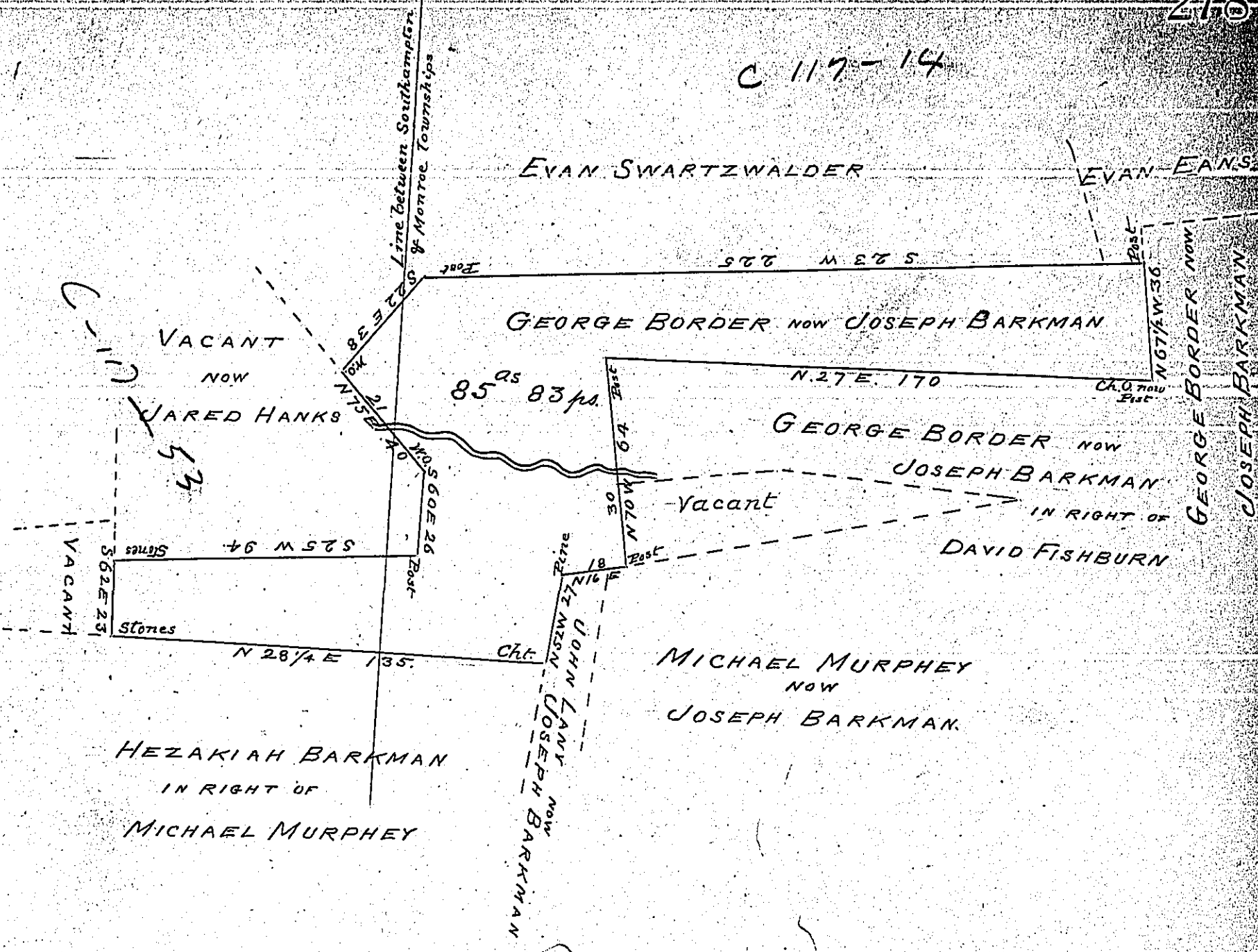


C 117-14



Situate on the waters of Elklick branch source in Southampton now in Southampton & Monroe townships Bedford county containing 85 acres 83 perches & allowance of 6 perches for roads &c Surveyed the 16th of April 1852 in pursuance of a warrant granted in the name of George Border (father) for 15 acres dated the 2nd of March 1829

Daniel Sams l.s.

To J Porter Crawley Esq
 Surveyor General

N.B. there is about 20 acres cleared on the above survey part of it from appearance has been cleared 20 or more years D Sams

IN TESTIMONY that the above is a copy of the original remaining on file in the Department of Internal Affairs of Pennsylvania, made conformably to an Act of Assembly approved the 16th day of February, 1833, I have hereunto set my Hand and caused the Seal of said Department to be affixed at Harrisburg, this fifteenth day of February 1904.

Isaac R. Brown
 Secretary of Internal Affairs.

